

!

DN15/20

DN25

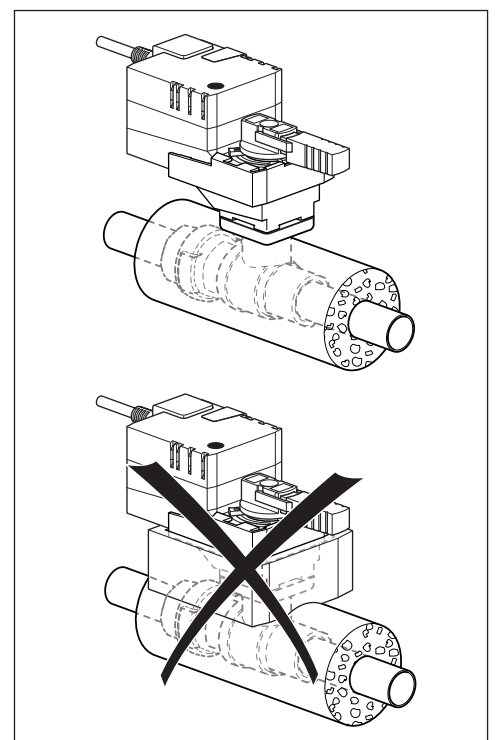
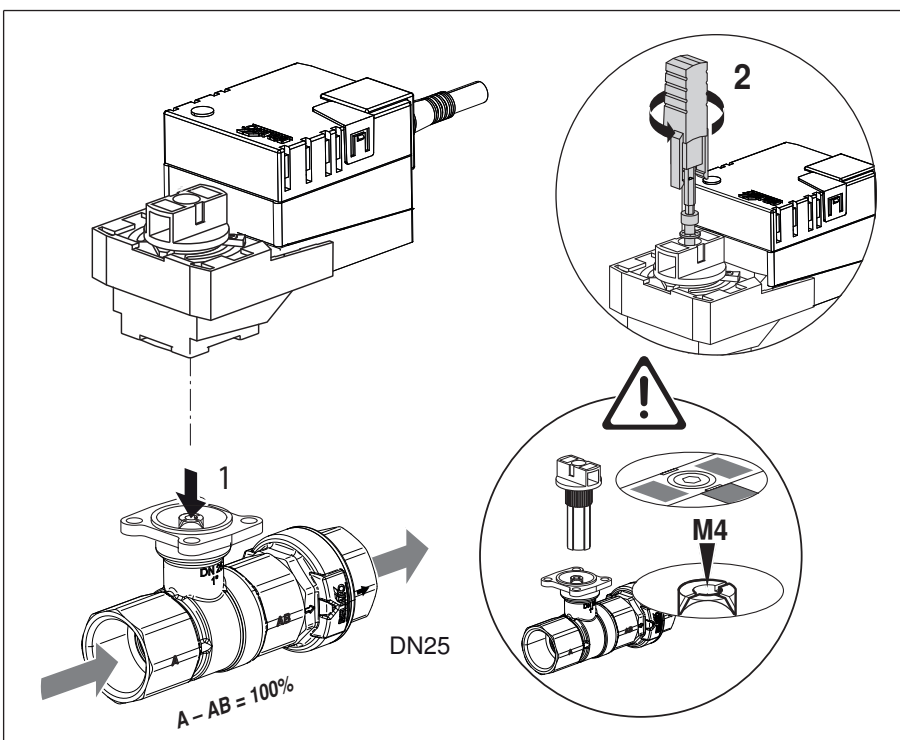
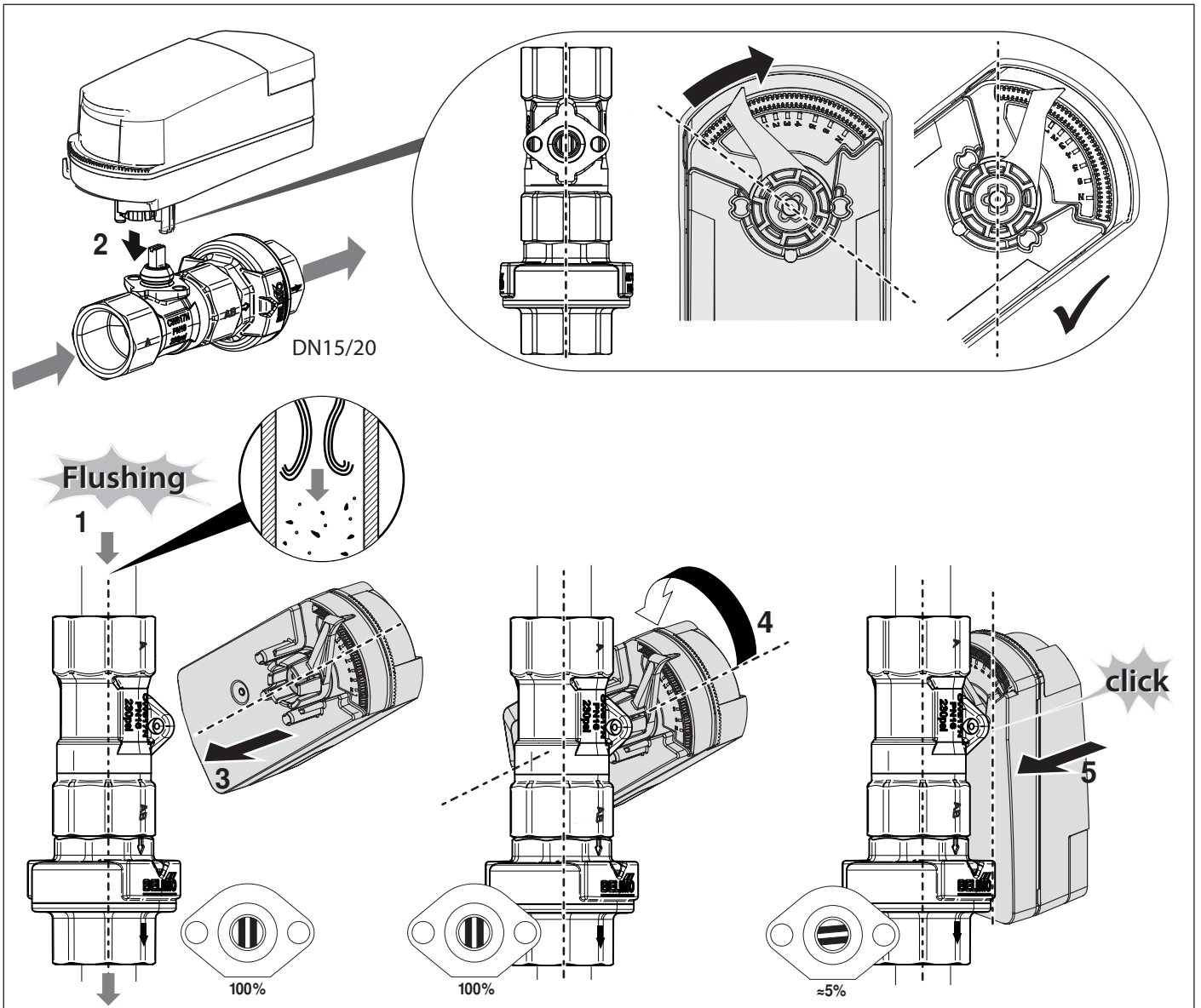
DN15/20

DN25

	L1 [mm]
C215QFL-..	13
C220QFL-..	14
R225FL-..	16

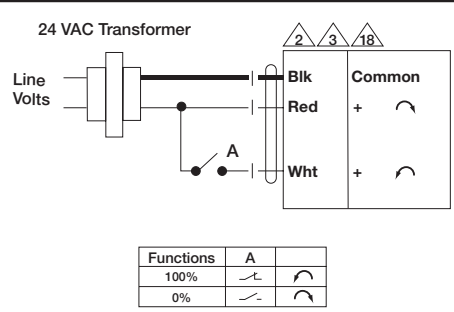
CQ..

TQF

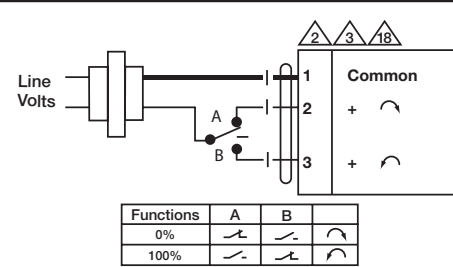


WIRING DIAGRAMS

CQ..24V, CQB24-3, CQB24-SR (-L) (-R)



On/Off, CQB24-3



Floating Point, CQB24-3

Notes:

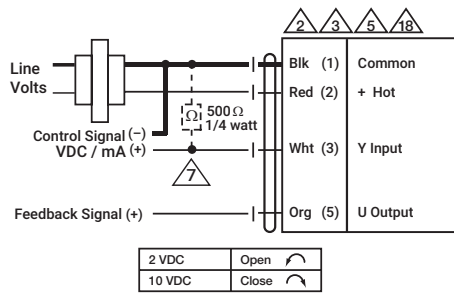
- ◆ Meets cULus requirements without the need of an electrical ground connection
- △2 Actuators may be connected in parallel. Power consumption and input impedance must be observed.
- △3 Actuators may also be powered by 24 VDC.
- △5 Only connect common to neg. (-) leg of control circuits.
- △7 A 500 Ω (ZG-R01) converts the 4 to 20 mA control signal to 2 to 10 VDC.
- △18 Actuators with plenum rated cable do not have numbers on wires; use color codes instead.



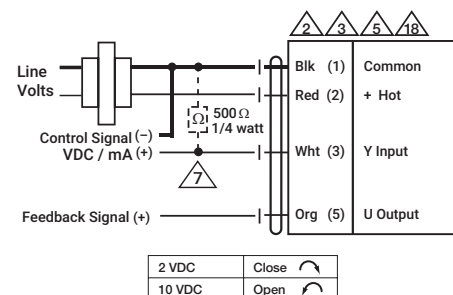
WARNING:

This product can expose you to lead which is known to the State of California to cause cancer and reproductive harm. For more information go to

www.P85Warnings.ca.gov

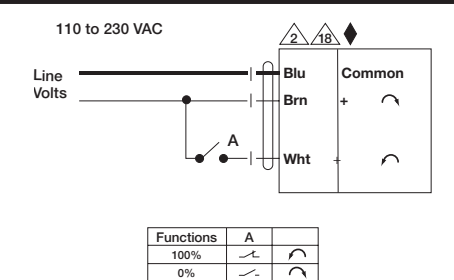


Proportional, CQB24-SR-L

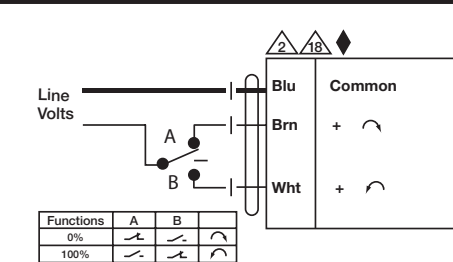


Proportional, CQB24-SR-R

CQ..110-240V, CQBUP-3



On/Off, CQBUP-3

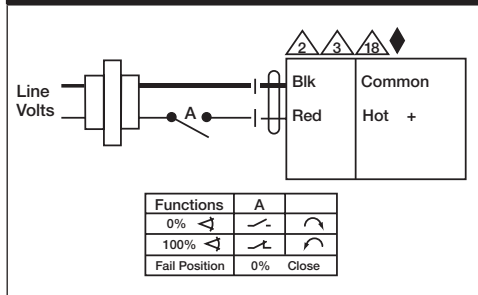


Floating Point, CQBUP-3

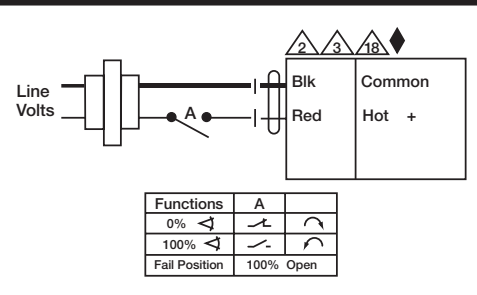
BLK	RED	WHT
Black	Red	White
Negro	Rojo	Blanco
Noir	Rouge	Blanc
Preto	Vermelho	Branco

WIRING DIAGRAMS

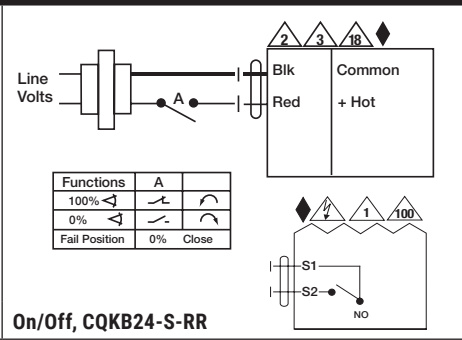
CQK..24V, CQKB24 (-RR) (-LL), CQKB24-S (-LL) (-RR), CQKB24-SR (-LL) (-RR) (-LR) (-RL), CQKBUP (-RR) (-LL)



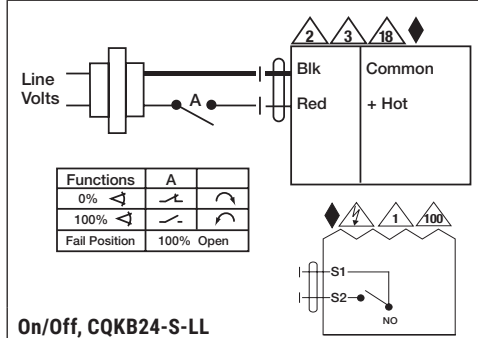
On/Off, CQKB24-RR, CQKBUP-RR



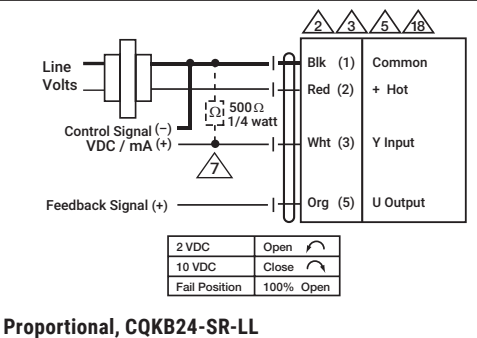
On/Off, CQKB24-LL, CQKBUP-LL



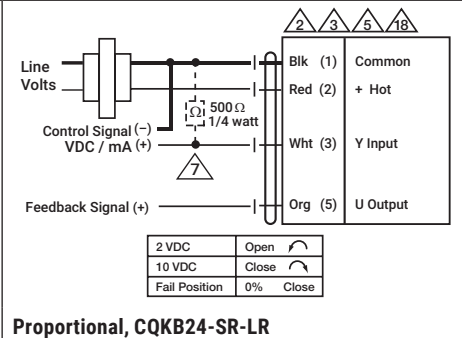
On/Off, CQKB24-S-RR



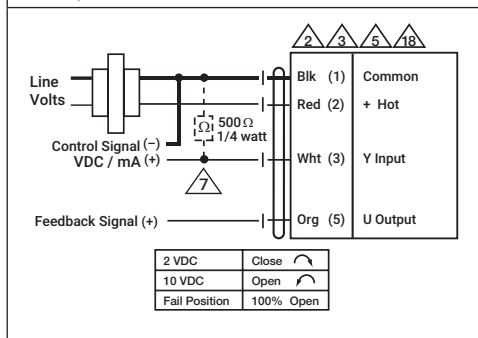
On/Off, CQKB24-S-LL



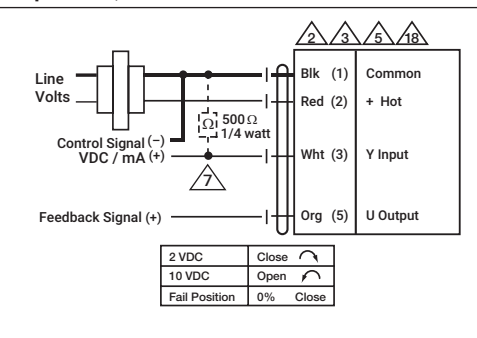
Proportional, CQKB24-SR-LL



Proportional, CQKB24-SR-LR

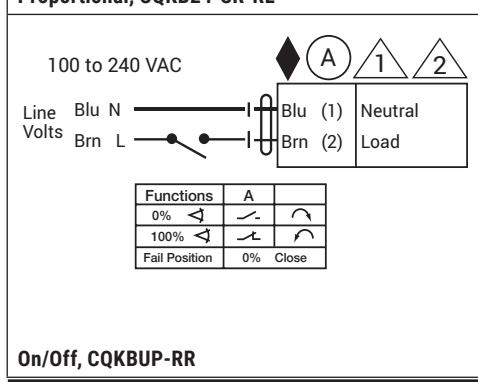


Proportional, CQKB24-SR-RL

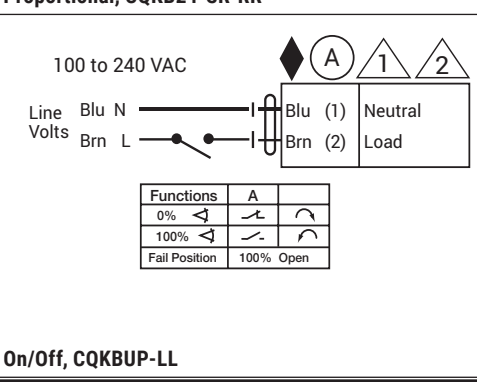


Proportional, CQKB24-SR-RR

- Notes:**
- Actuators with appliance cables are numbered.
 - Meets cULus requirements without the need of an electrical ground connection.
 - Apply only AC line voltage or only UL-Class 2 voltage to the terminals of auxiliary switches. Mixed or combined operation of line voltage/safety extra low voltage is not allowed.
 - Provide overload protection and disconnect as required.
 - Actuators may be connected in parallel. Power consumption and input impedance must be observed.
 - Actuators may also be powered by 24 VDC.
 - Only connect common to neg. (-) leg of control circuits.
 - A 500 Ω (ZG-R01) converts the 4 to 20 mA control signal to 2 to 10 VDC.
 - Actuators with plenum rated cable do not have numbers on wires; use color codes instead.
 - One built-in auxiliary switch, 1x SPST 1A @ 24 VAC/DC (resistive load), for end position indication, interlock control, fan startup, etc.



On/Off, CQKBUP-RR



On/Off, CQKBUP-LL

BLK	RED	WHT	ORG
Black	Red	White	Orange
Negro	Rojo	Blanco	Anaranjado
Noir	Rouge	Blanc	Orange
Preto	Vermelho	Branco	Alaranjado