

**Small Devices,
Big Impact.**

**Belimo
Company presentation
2024**



Our products

Seamless integration of innovative HVAC field-devices



Damper actuators



- Non fail-safe actuators
- Fail-safe actuators
- Actuators for harsh environmental conditions
- Fast running actuators
- Linear actuators
- Fire damper actuators
- Smoke control damper actuators
- Variable air volume

Sensors / Meters



- Duct sensors (Air)
- Pipe sensors (Water)
- Outdoor sensors (Air)
- Room units
- Thermal Energy Meters (TEM)
- Belimo Energy Valve™ with TEM

Control valves



- Energy Valves
- Pressure-independent control valves
- Zone valves
- Characterised control valves
- Ball valves
- Butterfly valves
- Globe valves
- Potable water valves

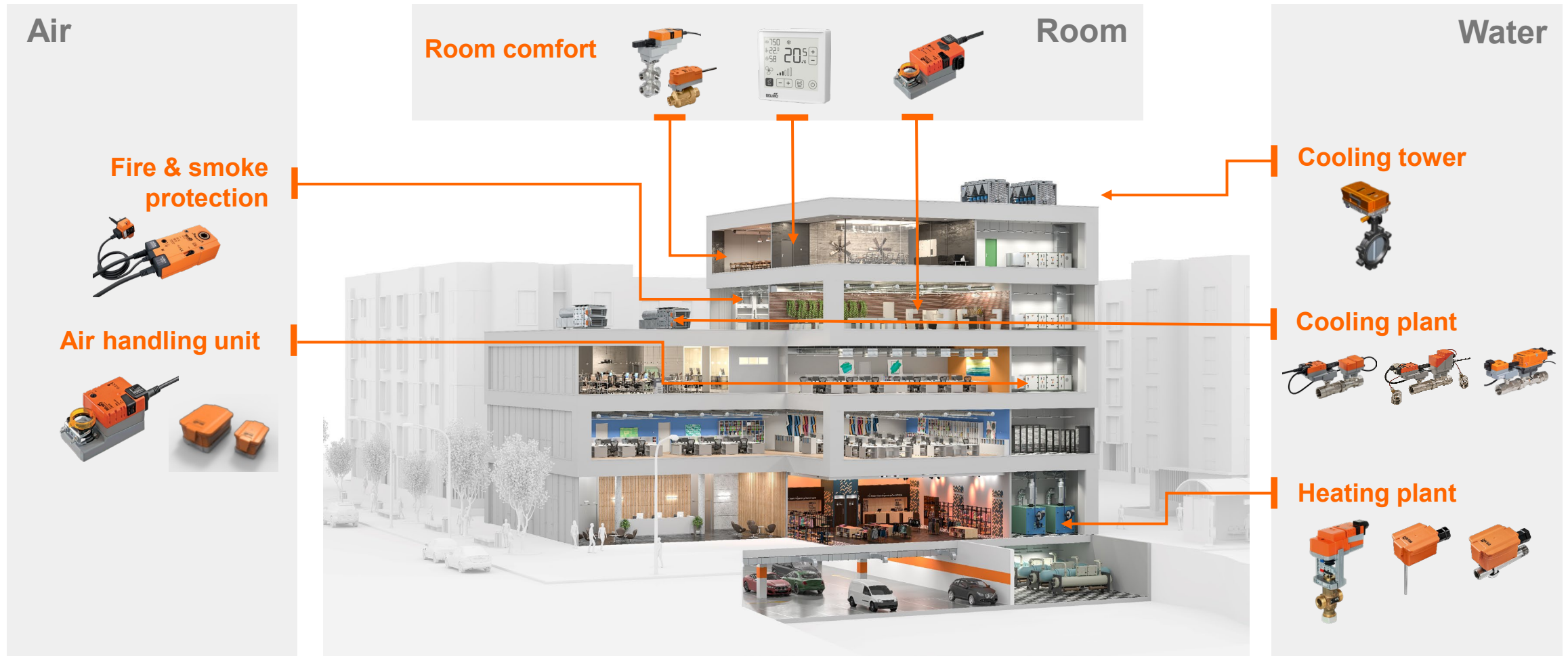
RetroFIT+



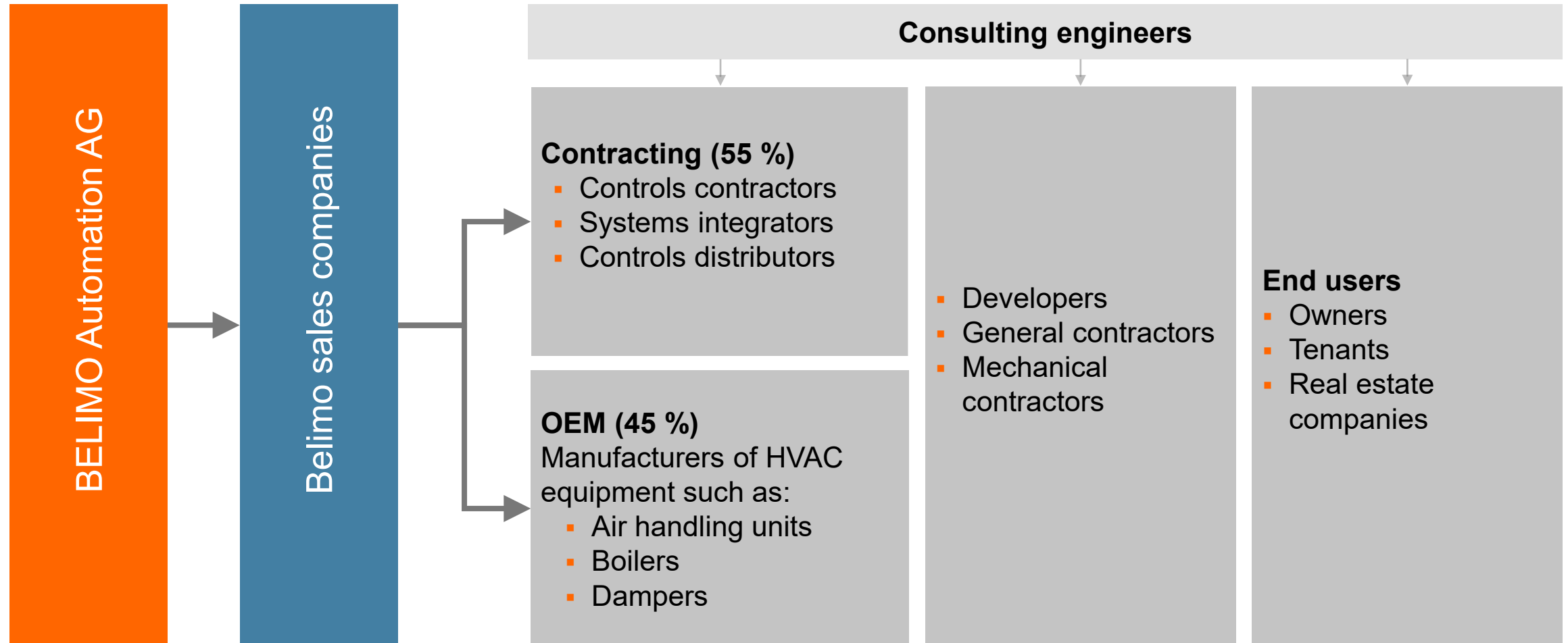
- Damper actuators
- Control valve/actuators
- Butterfly valve/actuators
- Globe valve/actuators
- Variable air volume

Applications

Heating, ventilation and air conditioning in buildings



We serve two main channels in HVAC OEM and contracting



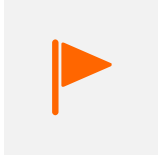
End-customer segments

Belimo products in every third commercial building



Belimo company facts

Successful by focusing on HVAC field devices



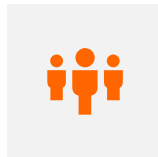
Founded: 1975
Headquarters: Hinwil, Switzerland



Listed on the Swiss Stock
Exchange since 1995.



About 8.0 million actuators are
shipped every year by the subsidiaries
worldwide.



More than 2,300 employees
worldwide in over 80 countries on
all continents.



We invest over 7% of our sales
every year in research and
development.



Global market leader in the
development and production of field
devices for the regulation and control
of HVAC systems.

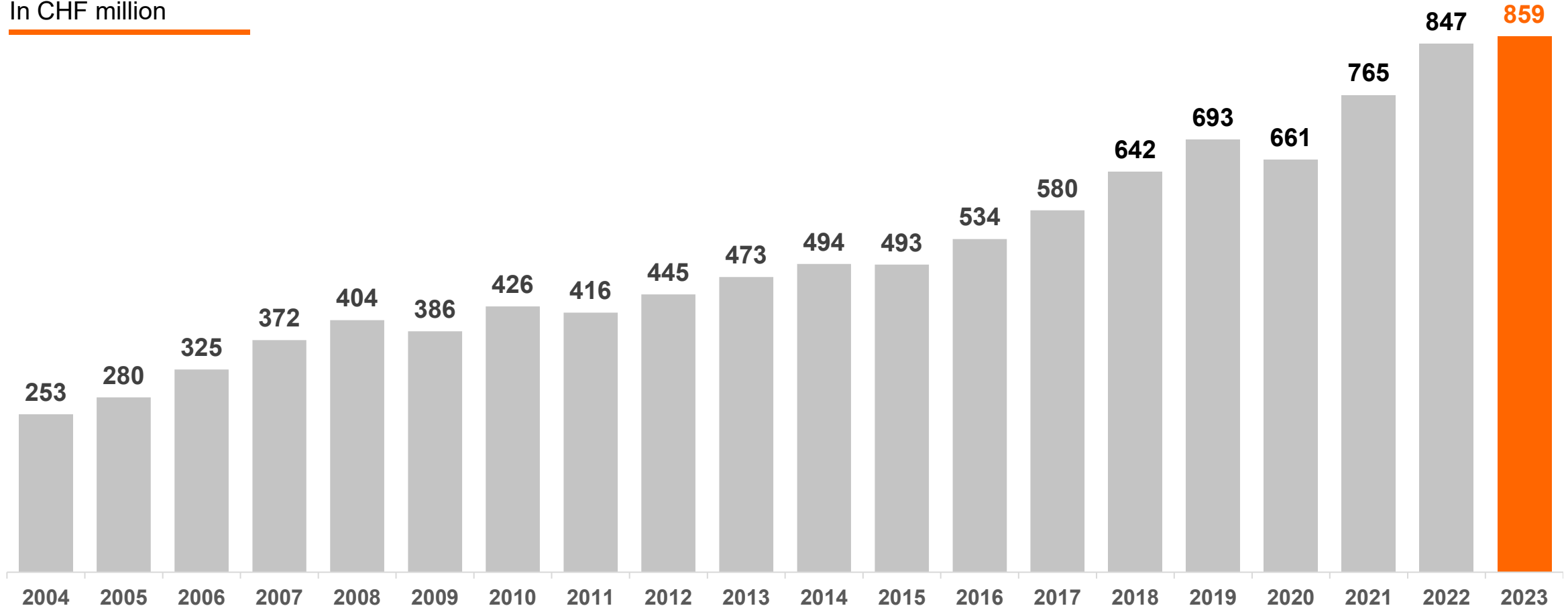
Our key figures

A continuous success story



Net sales 2004-2023

In CHF million

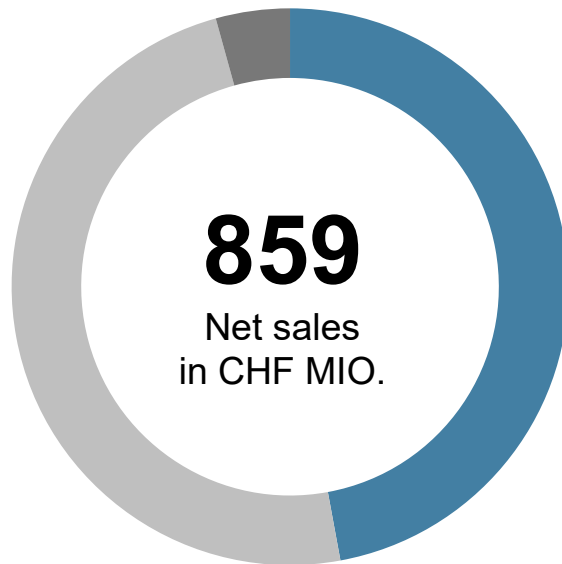


Our key figures

With CHF 859 million sales we are the market leader in field-devices

Net sales by application

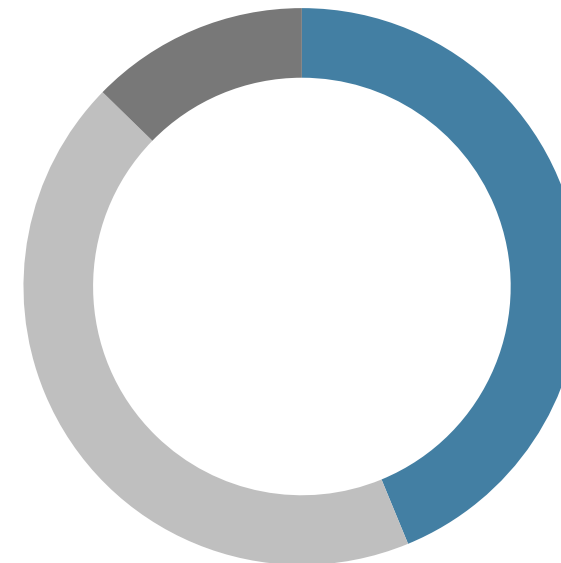
In %



- 47 Damper Actuators
- 49 Control Valves
- 4 Sensors and Meters

Net sales by region

In %



- 44 EMEA
- 44 Americas
- 13 Asia Pacific

Executive Committee

A leadership team with over 130 years of HVAC experience



Jim Furlong
Head of Americas

Dr. Adrian Stauffer
Head of EMEA

Dr. Elena Cortona
Chief Technology Officer

Dr. Markus Schürch
Chief Financial Officer

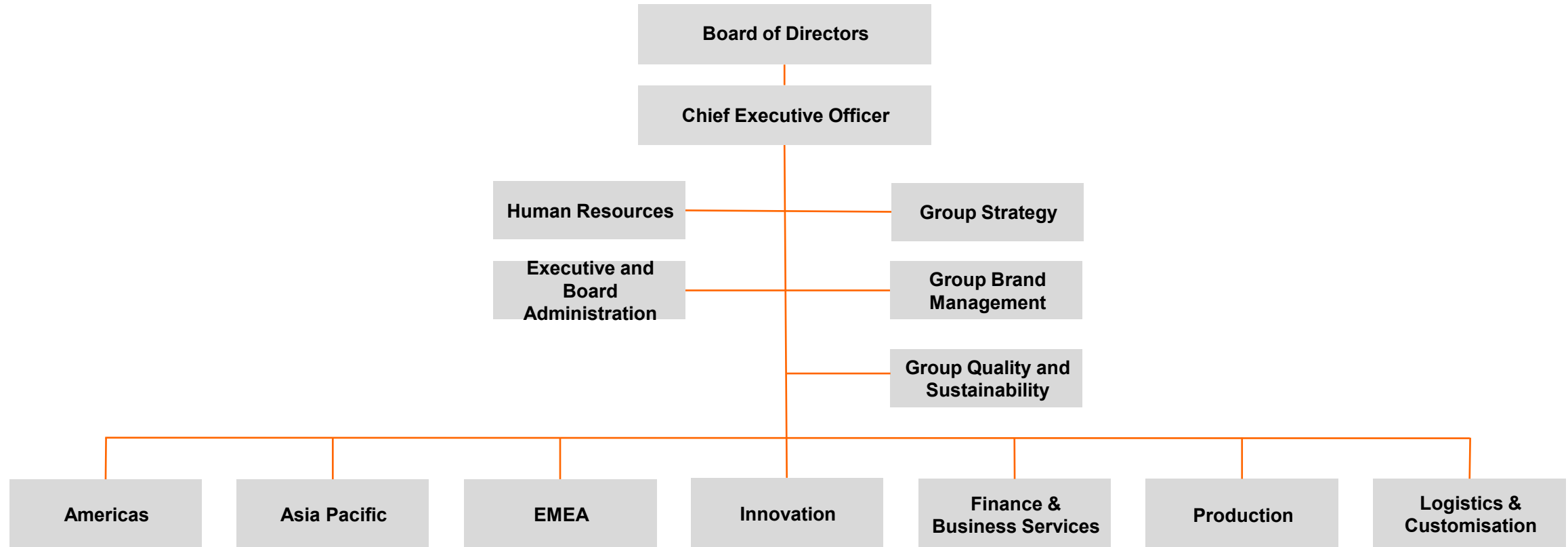
Lars van der Haegen
Chief Executive Officer

Louis Scheidegger
Head of Group Division
Production

Gary Economides
Head of Asia Pacific

Group structure

Three strong regions supported by global functions



Sites around the Globe

Close to our customers. In more than 80 countries.



-
- Regional headquarters
 - Subsidiaries
 - Representatives, Franchising partners
-

Americas locations

Over 400 Belimo people serving our customers



- Regional headquarters
- Subsidiaries



Mississauga, Ontario, Canada

Belimo Canada
Office and Warehouse

Dorval, Quebec, Canada

Belimo Sensors
Office, Production, and Warehouse

Danbury, CT USA

Belimo Americas regional headquarters
Office, Production, and Logistics & Customisation Hub
198,000 Sq. Ft.

Sparks, NV USA

Belimo Americas
Office, Logistics & Customisation Hub
19,850 Sq. Ft.

Sao Paulo, Brazil

Belimo Brazil
Office and Logistics Hub



Total Americas employees:

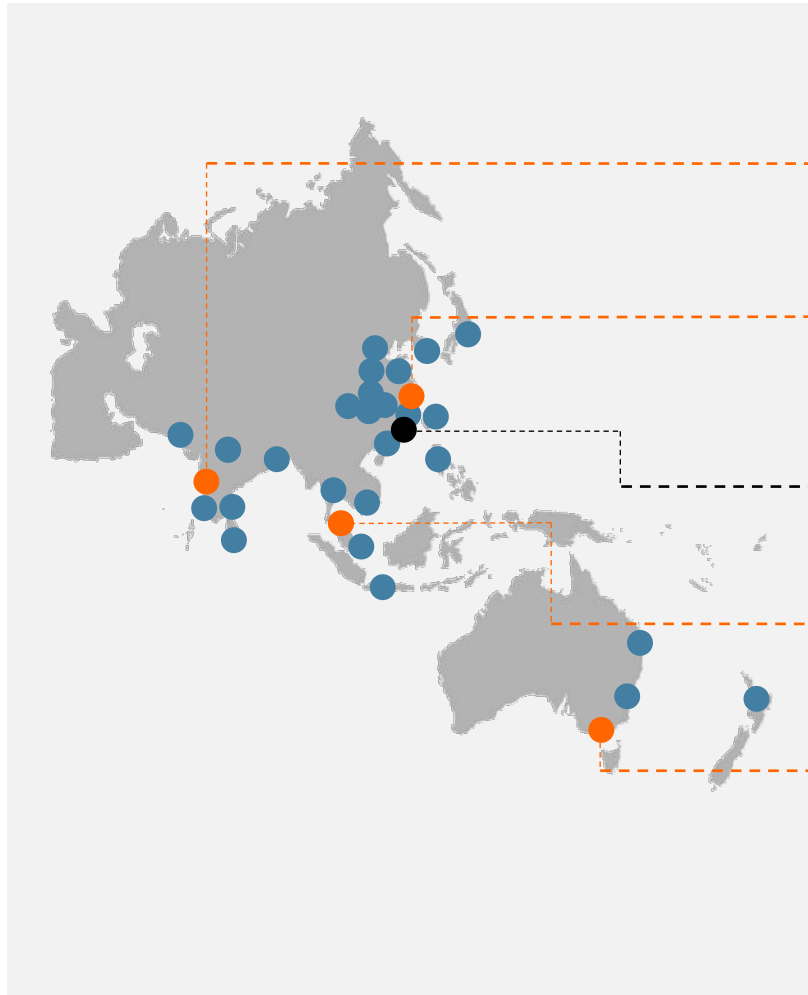
576

Asia Pacific locations

Fast growing Belimo organisation



Regional headquarters
 Subsidiaries
 Representatives, Franchising partners



Mumbai, India

Belimo India
Office, Logistics & Customisation Hub
2,000 sqm

Shanghai, P.R. China

Belimo China
Office, Logistics & Customisation Hub
5,005 sqm

Hong Kong, P.R. China

Belimo China, Asia Pacific regional headquarters
Office, Logistics & Customisation Hub
1,900 sqm

Kuala Lumpur, Malaysia

Belimo Malaysia
Office, Logistics & Customisation Hub
1,355 sqm

Melbourne, Australia

Belimo Australia
Office, Logistics & Customisation Hub
1,090 sqm

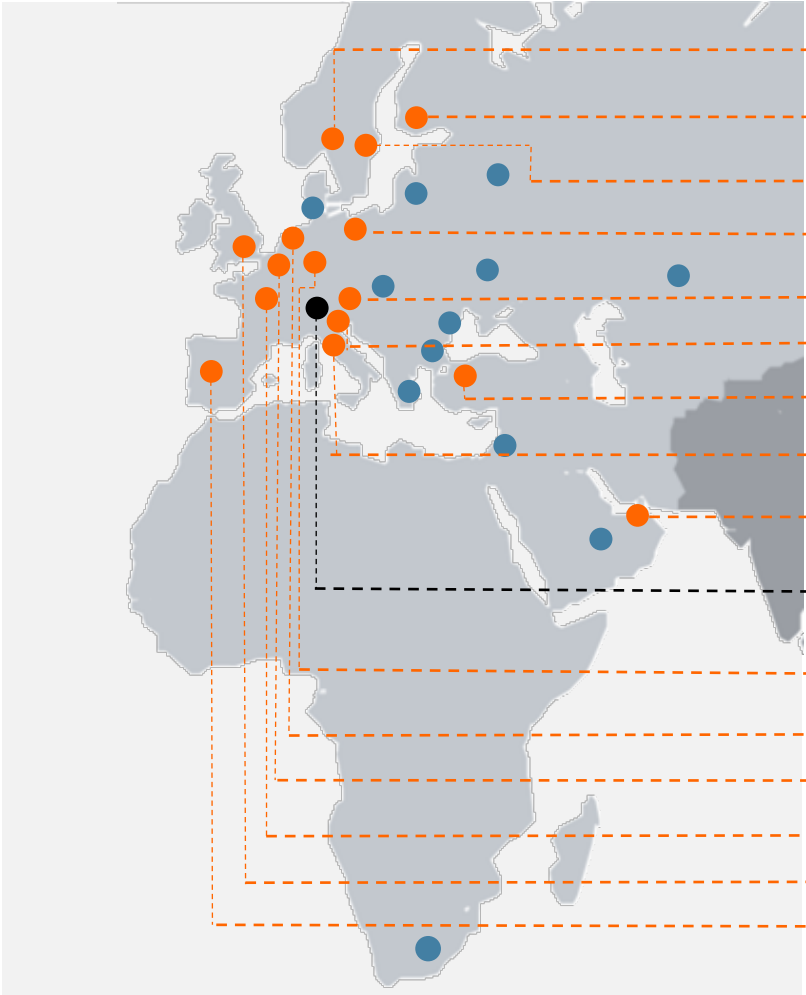


Total Asia Pacific employees:

379


EMEA locations

Covering the EMEA market



- Belimo Norway
- Belimo Finland
- Belimo Sweden
- Belimo Poland
- Belimo Austria
- Bereva
- Belimo Turkey
- Belimo Italy
- Belimo UAE
- Belimo Switzerland**
- International Headquarters**
- Belimo Germany
- Belimo Netherlands
- Belimo Belgium
- Belimo France
- Belimo United Kingdom
- Belimo Spain

- Regional headquarters
- Subsidiaries
- Representatives, Franchising partners



Total Belimo Europe employees:

1390

Our history

Key milestones on our 49-year long history



1975

Foundation of BELIMO Automation AG Switzerland



1976

Creation of first direct coupled actuator



1984

Introduction of the variable air volume controllers (VAV)



1992

Introduction of the brushless direct current motor. Actuators contain a microprocessor for the first time.

Our history

Key milestones on our 49-year long history



1995

Safety actuators and variable air volume controllers were updated, and the tight connection between mechanics and electronics results in attractive products



1999

Creation of the Characterized Control Valve (CCV)



2003

Creation of Pressure Independent Valve Technology (PICCV)



2005

The new generation of actuators without safety position is introduced within the following three years

Our history

Key milestones on our 49-year long history



2009

Creation of the 6-Way Characterized Control Valve (6-Way CCV)



2012

Creation of the Belimo Energy Valve™



2015

Introduction of the ZoneTight product range



2016

IoT product range of cloud-enabled products

Our history

Key milestones on our 49-year long history



2016

Launch of the new actuator and valve assembly for high flow rates including smartphone diagnostics via NFC



2016

Introduction of the new actuator for variable air volume control — Belimo ZoneEase™ VAV



2017

Introduction of the Belimo Sensors product range

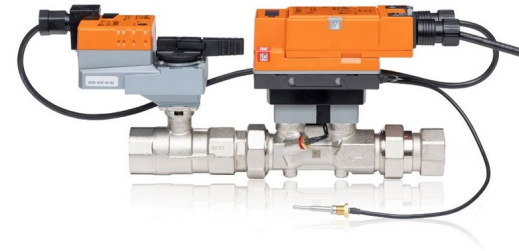


2019

Launch of room sensors

Our history

Key milestones on our 49-year long history



2020

Production of the 100 millionth actuator

2021

Launch of the new range of Belimo Energy Valve™ with the Thermal Energy Meter™

2022

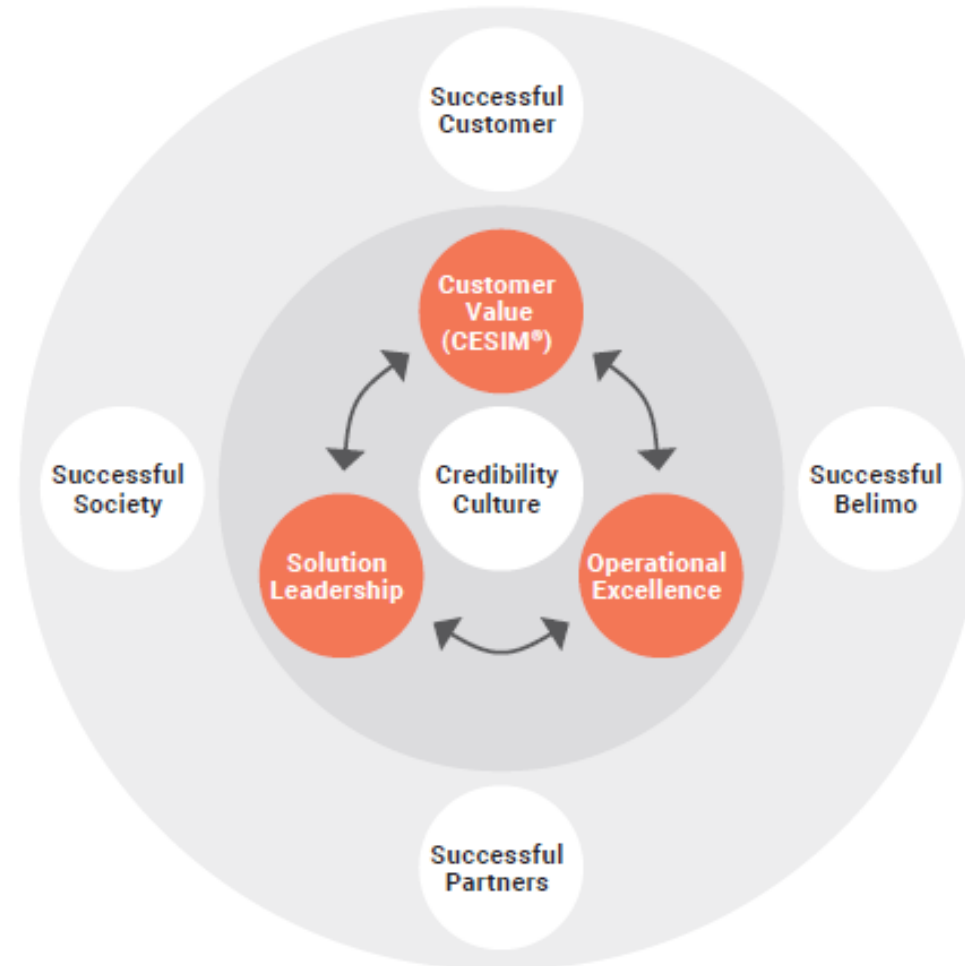
Launch of the new room sensors and operating units with ePaper display and virtual display

2023

Launch of the RetroFIT+ program.

Belimo value creation model

Successful customers ultimately lead to a successful Belimo



Operational excellence

Partnership with suppliers

Sourcing (Suppliers)

Assembly (Belimo)

Logistics & Customisation (Belimo)

88% of production costs

8%

4%



Operational excellence

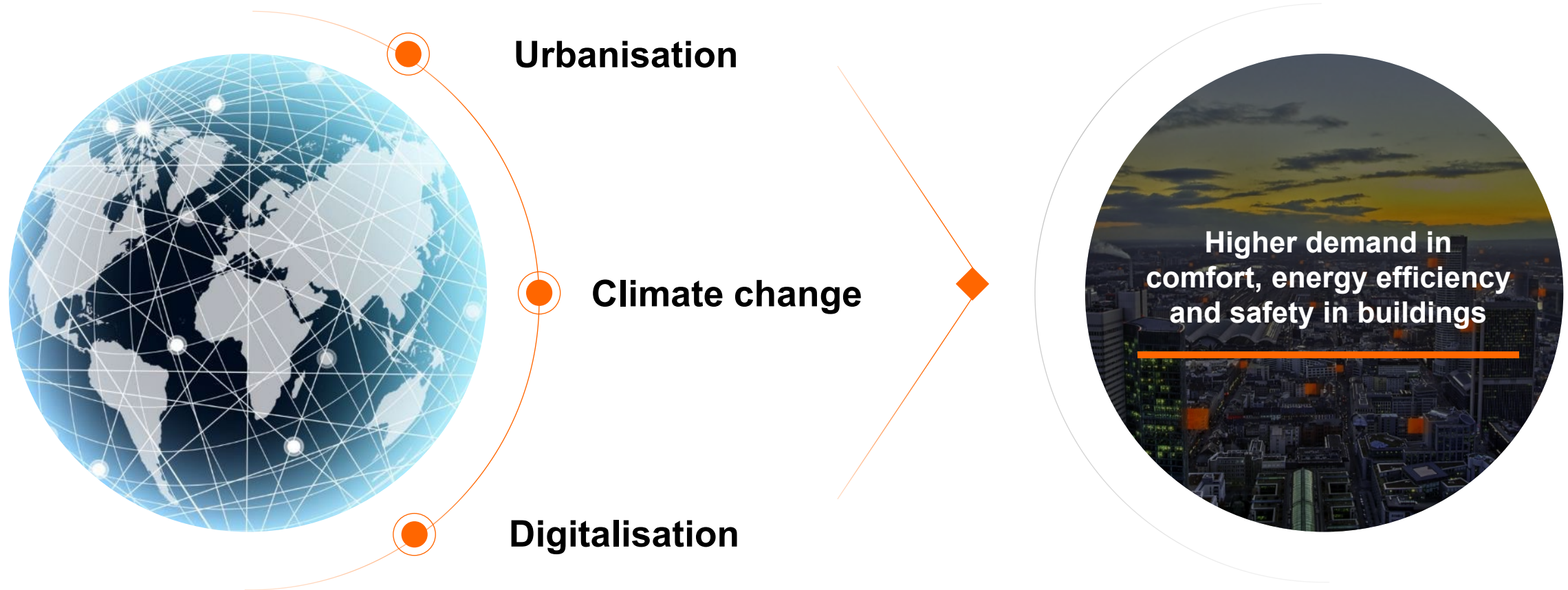
Our commitment to quality



- Every actuator is extensively tested before delivery. About 8.0 million actuators are shipped every year by the subsidiaries worldwide.
- Our specialised know-how and the "Swiss quality" make a five-year warranty on the entire range possible.

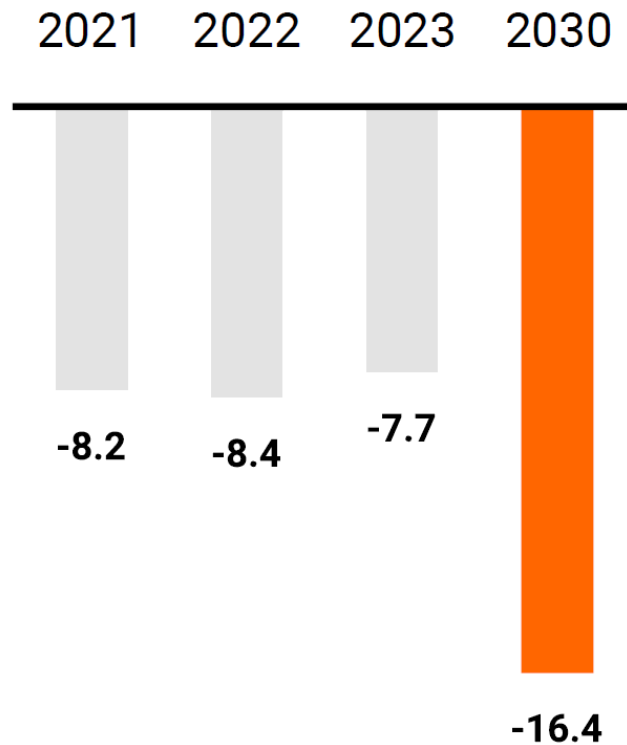
Megatrends

Driving higher demand in comfort, energy efficiency and safety



Our sustainability goals

We are committed to sustainability

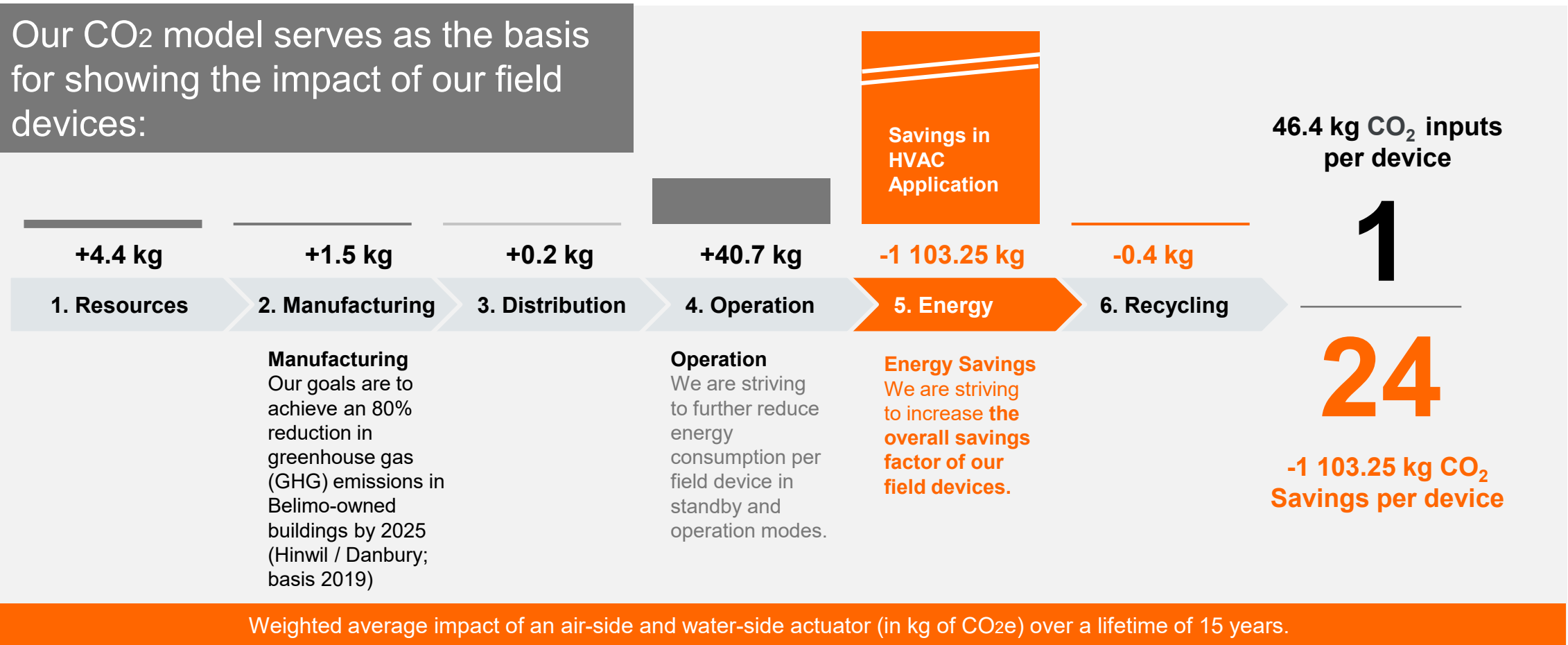


We are striving to double the total avoided GHG emissions from our sold field devices by 2030 (compared to 2021 levels and measured in million tons of CO₂e)

Our sustainability goals

Quantifying our impact

Our CO₂ model serves as the basis for showing the impact of our field devices:



Our purpose

What we want to impact

COMFORT



Create more comfort and health for people in buildings.

C

ENERGY



Contribute to higher energy efficiency of buildings with visible energy savings.

E

SAFETY



Provide technology that saves lives and minimises damage to buildings and assets.

S

INSTALLATION



Make installations easier and the commissioning faster.

I

MAINTENANCE

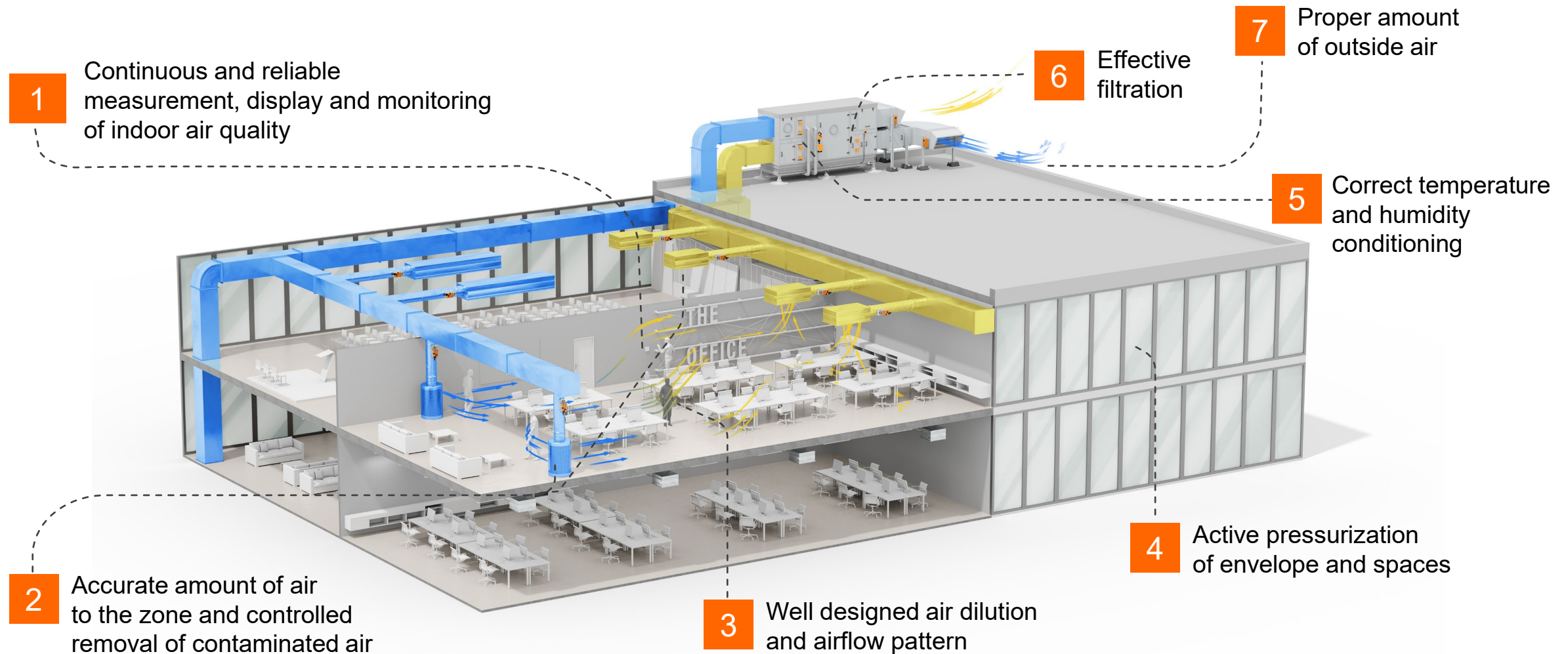


Assure long lifetimes and minimal maintenance efforts for HVAC controls equipment.

M

Basic requirements for HVAC systems for healthy indoor air

7 essentials of a healthy building



Our contribution to “Safety” of CESIM – Healthy indoor air

For the better health of future generations



Belimo contributes to healthy indoor air with:

- Accurate and reliable room and duct sensors
- VAV solutions for demand-controlled ventilation
- Fast-acting actuators and tightly closing valves
- Belimo Energy Valve™ for precise and stable control, energy measurement and monitoring
- Seamless BMS and cloud-platform integration



Application examples

Air handling units

Belimo devices enable the precise and efficient conditioning of air in buildings, for example:

- Actuators safely control outdoor air or bypass dampers
- Temperature, humidity and air quality sensors measure room comfort
- Pressure sensors ensure the right airflow and identify dirty filters



Application examples

Heating water plants

Belimo devices control the generation and the flow of hot water in a building in an energy-efficient way, for example:

- Temperature sensors measure the condition of the supply and return water
- Energy Valves control and monitor the flow of thermal energy to the building
- Butterfly valves stage hot water boilers based on demand
- Pressure sensors ensure sufficient water pressure in the piping system



Application examples

Fire & smoke protection

Belimo safety actuators save lives and help to minimise damage to buildings and tangible assets, for example:

- Fire damper actuators seal off fire-rated compartments against the spread of fire and smoke through ventilation ducts.
- Smoke control damper actuators enable mechanical smoke extraction from escape and rescue routes.



Application examples

Controlling room comfort

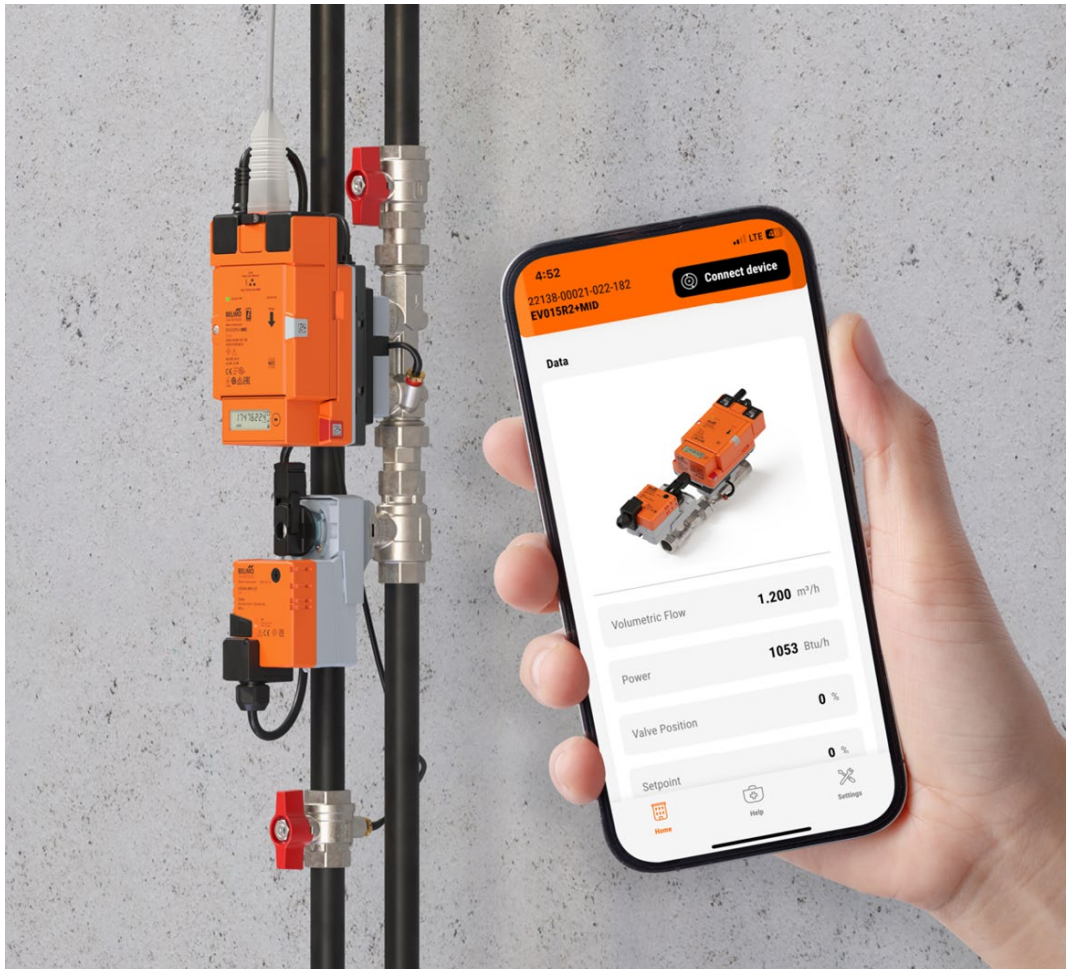
Belimo devices provide a comfortable room environment that is essential for the well-being and productivity of people:

- Room sensors measure the temperature, humidity and air-quality in the room
- Variable Air Volume actuators provide the right amount of fresh air to the room
- 6-way valves precisely control the flow of cold/hot water in a chilled/heated ceiling
- ZoneTight valves control water flow to a fan coil and close it completely tight if no demand exists



Solution Leadership in HVAC Field Devices

New Era of the Integrated Thermal Energy Management

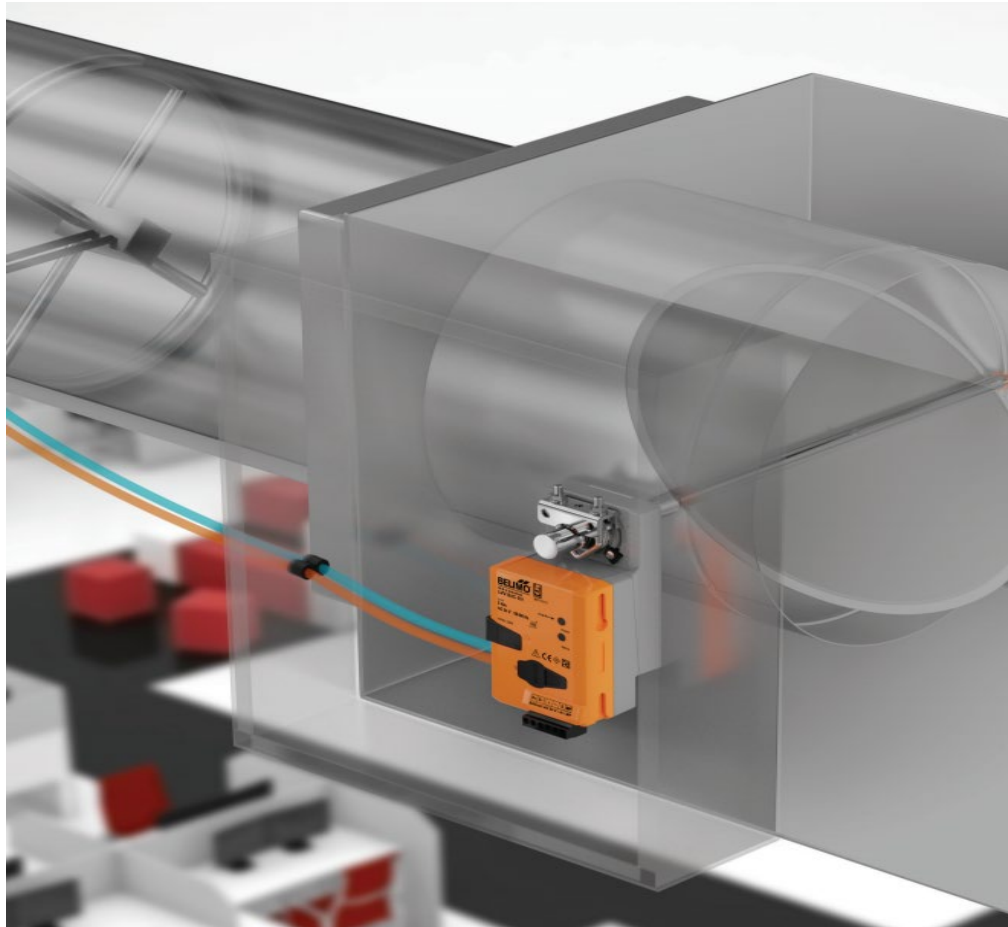


Belimo Energy Valve™ with the Thermal Energy Meter

It integrates energy measurement and control, Delta T management, and IoT-enabled billing in one device. It offers seamless and direct integration to the BMS or IoT-based monitoring platforms. Energy measurement and control with certified energy measurement and billing are united. It brings together performance features to save you time and costs.

Solution leadership in HVAC field devices

Innovations in air for the success of our customers



Belimo ZoneEase™ VAV

The most innovative VAV-solution to simplify the commissioning process.

It provides commissioning support via the cloud and the Belimo Assistant App. ZoneEase™ substantially reduces project complexity and commissioning time and automatically documents all configuration settings. The progress of a VAV job gets fully transparent.

Solution leadership in HVAC field devices

Innovations in sensors for the success of our customers

Room sensors and operating units

The foundation of comfort



- Timeless design
- Fast installation
- Easy configuration
- Short reaction time
- De-energised configuration via smartphone*
- Intuitive diagnostic function via smartphone*

* for active devices

Belimo ultrasonic flow sensor

Flow measurement that you can trust



- Accurate and reliable
- Patented temperature and glycol compensation logic
- Compact design
- Easy installation
- Accurate results without drift

Belimo RetroFIT+

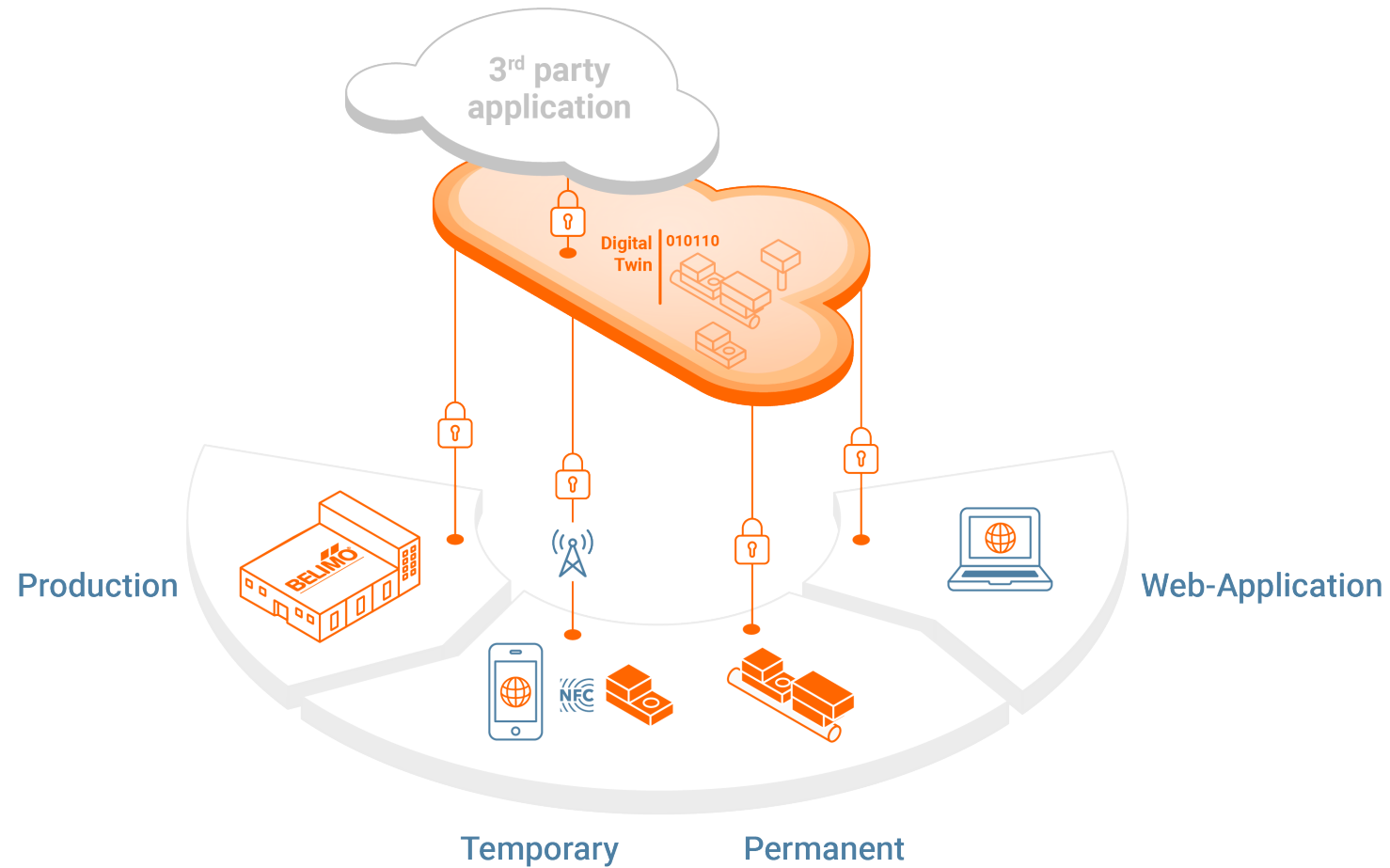
The best replacement solution

- Our RetroFIT+ product replacement tool enables you to find retrofit products based on various parameters. It is a quick and straightforward tool providing fast HVAC replacement solutions.
- The Belimo RetroFIT+ product replacement tool is available as an App. The App is free and can be downloaded from the iTunes store or Google Play.



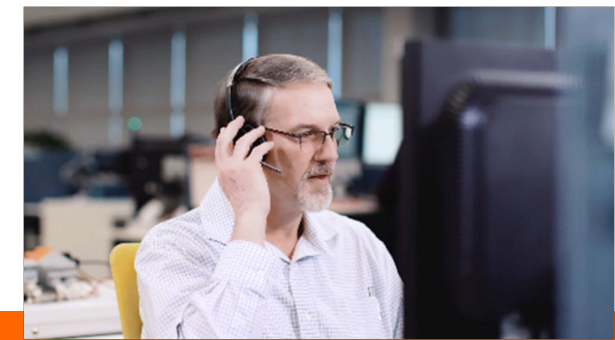
Solution leadership

Belimo IoT-ready products and the Belimo eco-system



Belimo added values

More than just products



We are where you need us, speak your language and understand you.

Complete product range with shortest delivery time in the industry.

5-year warranty and tested quality.

Award-winning service to assist customers quickly and effectively, remotely or on site.

Credibility culture

Hands-on training in Belimo Experience Centers

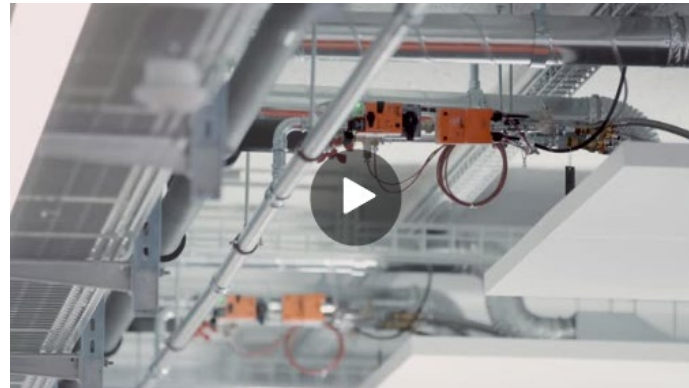


Belimo film channel

More films on www.YouTube.com/@Belimo_Global



Company film



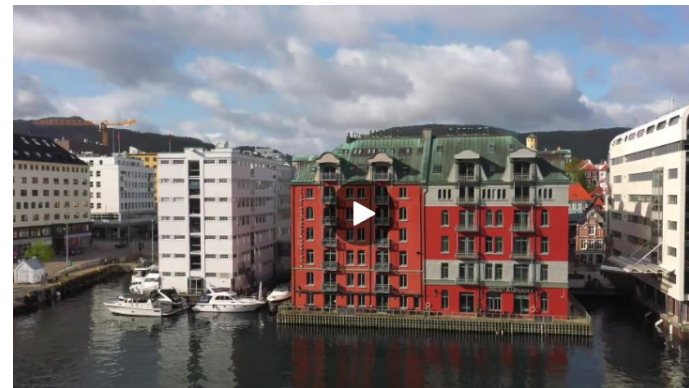
Our commitment to quality



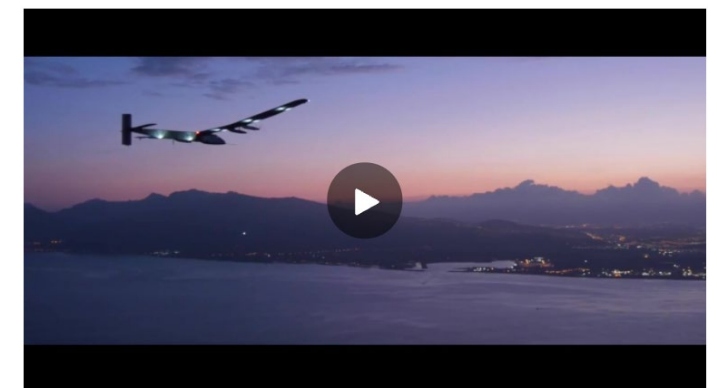
Creating customer value with CESIM



Product launch - new generation Butterfly Control Valve



Efficiency made easy: a Belimo Energy Valve™ story



Awarded the Solar Impulse Efficient Solution Label



Comfort

Installation

Maintenance

Small Devices,
Big Impact.

Energy Efficiency

Safety

The logo features the word "BELIMO" in a bold, black, sans-serif font. Above the letters "I" and "M" are two parallel orange slanted bars. A registered trademark symbol (®) is positioned to the upper right of the letter "O". A solid orange horizontal line is located directly beneath the text.

BELIMO®